

Lung/Chest with Removeable Diaphragm and Lung Pair Insert

LUNG/CHEST PHANTOMS

The Next Best Thing to Human Lungs for Radiographic Studies

- Extensive Vascular Detail
- Different Degrees of Vascular Contrast Available
- Interchangeable Normal and Pathological Lungs

Developed in conjunction with the University at California, Irvine's Department of Radiological Sciences, the Alderson Lung/Chest Phantom is a specialized phantom, providing a high degree of realism in chest radiography.

The Alderson Lung/Chest Phantom extends from the neck to below the diaphragm. It is molded around a male skeleton, corresponding to the external body size of a patient, 5 feet, 9 inches (175 cm) tall and weighing 162 lbs (73.5 kg). RSD materials are equivalent to natural bone and soft tissues.

Animal lungs are selected to match the size of an adult male. Lungs are fixed in the inflated-state and are molded to conform to the pleural cavities of the phantom. The pulmonary arteries are injected with a blood equivalent plastic.

The Lung/Chest Phantom with simulated left coronary artery reveals several areas of coronary artery irregularity and narrowing.

To demonstrate different pathological conditions, five standard pathologies are incorporated:*

- Two contiguous 0.5 cm nodules at the tip of the first left rib
- A 0.6 cm nodule superimposed with large vessel in the left lower lobe
- A 1.5 cm nodule, left mediastinal shadow
- A 0.6 cm nodule blending in with the right pulmonary artery
- Pneumonia in the right lower lobe

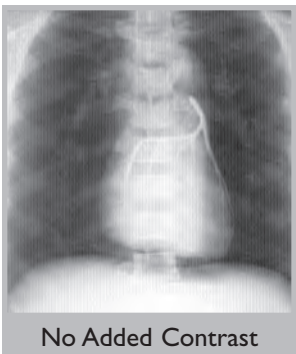
Custom Pathologies Are Available Upon Request

The Lung/Chest Phantom is available either with the diaphragm permanently sealed to the interior of the phantom, fixing the lungs in place, or with a removeable diaphragm, which permits the interchange of lungs, and provides an unlimited number of configurations and disease simulations.

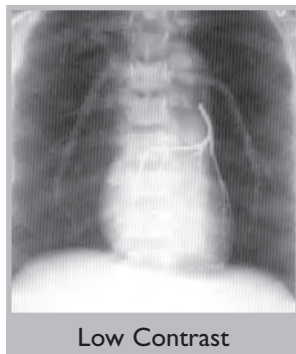
Custom pathologies are available as wrap around sheets on either or both lungs.

All models are available with blood-equivalent pulmonary arteries, or with low or high contrast media added.

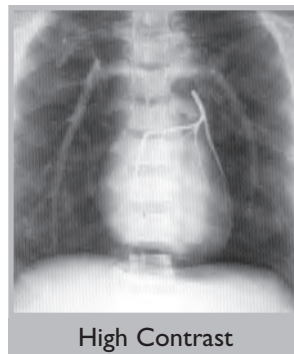
**Bullet points are optional items.*



No Added Contrast



Low Contrast



High Contrast

MODEL NUMBERS

RS-310

Lung/Chest Phantom with permanently sealed diaphragm

RS-315

Lung/Chest Phantom with permanently sealed diaphragm and left coronary artery

RS-320

Lung/Chest Phantom with removeable diaphragm lung pair insert without coronary artery

RS-330

Lung/Chest Phantom with removeable diaphragm lung pair insert with coronary artery

RS-340

Lung/Pair insert without coronary artery

RS-345

Lung/Pair insert with coronary artery